

# MAINTENANCE & REPAIR GUIDE

## ROOFING PRODUCTS & SYSTEMS



*"The name trusted in roofing since 1906"*



# Product Spotlight



## Ideal maintenance and repair product for all roofs in all weather

- Extremely strong and elastic with high elongation and tensile strength to ensure performance under conditions that may cause asphalt-based cements to fail.
- Can be applied to wet/dry surfaces and installed underwater.
- VOC compliant in all states including California.

## Repair Hero

Repair Hero is a solvent-based, fiber-reinforced terpolymer sealant intended for the repair of asphalt, modified bitumen, metal, Kynar®, concrete, TPO, PVC, Elvaloy®/PVC, Hypalon® (CSPE), PIB and EPDM roofs.

## Features and Benefits

- Ideal maintenance and repair product
- Universal adhesion to all roof substrates
- True all-weather repair product
- Wet, dry and underwater repairs
- Excellent adhesion and elongation
- Strong tensile strength
- Non-yellowing – UV stable
- Superior weathering
- No stirring required
- Will not freeze
- Cures in 24-48 hours
- Shelf life of 2 years or more



*See page 27*

# ECHO COLORWAY

## Echo Colorway

Echo Colorway is a one-component caulk with rapid moisture cure to form a durable bond. Supplies aggressive adhesion with the most common construction substrates, while ensuring complete compatibility – even with rubberized asphalt flashing and other flexible plastic building materials.

## Uses

Echo Colorway is designed for interior/exterior use for sealing around windows, doors and siding. Bonds to a variety of materials including fiber cement, cedar, brick, stone, coated aluminum, steel, fiberglass, vinyl, PVC, stucco, EIFS, wood, glass, concrete, masonry, flashing tapes and Kynar® coatings.

## Features

- +/-50% joint movement
- Interior and exterior use
- Vertical and horizontal surfaces
- Applied in a wide range of temperature and weather conditions (-40°F to 140°F)
- Aggressive adhesion to common construction substrates
- Bonds to wet surfaces
- Compatible with SBS flashing
- Paintable in 2 hours
- No solvents
- Low VOCs

*See page 18*





# TABLE OF CONTENTS



<b>Product Spotlight</b>	2-3
<b>M&amp;R Selling Station</b>	5
<b>End Caps</b>	6-7
<b>EPDM Accessories</b>	8-11
<b>TPO Accessories</b>	12-13
<b>No-Weld TPO</b>	14-15
<b>Sealants &amp; Caulkings</b>	16-18
<b>Asphalt Cements &amp; Coatings</b>	19-22
<b>Seal-Fast Tapes</b>	23-25
<b>Waterproofing &amp; Accessories</b>	26-27

## Maintenance & Repair Plan-o-gram

\*\*The products shown on this display are recommended by Mule-Hide but can easily be changed out with products that are more specific for your location.

**A**

(4) Seal-Fast® Sealing Primer	(4) Seal-Fast® Fabric Tape	(15) 121 Asphalt Primer	(18) 271 Mod Bit Sealant
<b>Items in yellow will ship with display</b>			
(1) Aluminator Roof Drain	(30) Maintenance & Repair Slide Charts		
(9) EPDM Tape Primer Quart Cans	(50) Single-Ply Accessories Catalogs		
(8) EPDM Uncured Flashing Tape			
(8) EPDM Cured Cover Tape			
(6) Seal-Fast® Temporary Low-Slope Roof Sealer			

Dimensions: 11-1/2", 10-1/2", 9", 10", 15"

**B**

(24) 4" Pourable Sealer Pockets		
(4) Seal-Fast Tape Black 6"x 50'	(6) Seal-Fast Tape Black 4"x 50'	(15) EPDM In-Seam Tape 3" x 25'
(80) Pre-Cut Inside/Outside Corners (20 per box)		(10) EPDM 1"-6" Black Pipe boot w/tape
(6) Tape Primer		
(25) Water Cut Off	(25) Black Lap Sealant	
(4) Acrylic Water Base Bonding Adhesive	(4) Weathered Membrane Cleaner	

Dimensions: 8", 12-1/2", 13", 8-1/2", 12-1/2", 15"

\*\*\*Approximate Measurements

**C**

(5) Molded Pourable Sealant Pocket	(100) TPO T-Joint (1 box)	(8) TPO Cut Edge Sealant
(20) TPO Universal Corner White	(12) Seam Probe	
(6) Seal-Fast® Tape White 6"x 50'	(6) Seal-Fast® Tape White 6" x 25'	(15) Seal-Fast® Tape White 3" x 50'
(6) TPO Primer		
(24) Universal Single-Ply Sealant	(8) TPO 3/4"-8" Pipe Boot White	
(4) EPDM One-Part Pourable Sealer Black (4-per container)	(4) Thermo Pourable Sealant White (4-per container)	

Dimensions: 10", 6-1/2", 13", 9", 13-1/2", 14-1/2"

**D**

(4) A-200 Flashing Elastomeric Acrylic Coating	
(4) A-300 Finish Elastomeric Acrylic Coating	
(4) 100% Silicone Sealant	
(4) 100% Silicone Roof Coating	
(2) TieTex® 325 12" x 300'	(4) TieTex® 325 6" x 300'
(1) 211 Plastic Cement	(1) 241 Premium Modified Flashing Cement
(1) 221 Wet/Dry Plastic Cement	(1) 421 Mod Bit Flashing Adhesive

Dimensions: 9", 9", 9", 9", 14", 18"

This side of display can have empty pails upon request. If that is the case we will have additional products from Silicone Coatings and Elastomeric Acrylic Coating represented

# END CAPS

End Caps are a great way to add to your showroom. We have several available: M&R, EAC, Silicone & Drains. For details about these programs please contact your local Territory Manager or Customer Service at 800-786-1492.



# NOTES





# EPDM ACCESSORIES

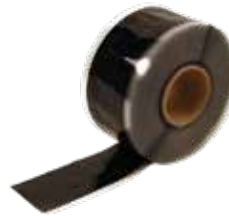


## LOW-VOC BONDING ADHESIVE

A high strength solvent-based contact adhesive that allows bonding of EPDM and TPO to various porous and non-porous substrates. Specially formulated using a blend of VOC exempt and non-exempt solvents to meet the < 250 g/L VOC content requirements of the OTC Model Rule for adhesives and sealants.



Product Code	Description	Coverage	Shelf Life
08MHETBLV1	1-Gallon Pail (6/ctn)	60 sq.ft. per gallon	1 year



## EPDM IN-SEAM TAPE

A black or white, butyl rubber-based adhesive in tape form. Formulated to provide high green strength in both shear and peel. May be used on ballasted, mechanically attached and fully adhered EPDM roofing systems.

*Requires the use of Tape Primer or Low VOC Tape Primer.*



Product Code	Description	Carton	Shelf Life
08MHINSMT2	Black 3" x 25'	12 per	1 year



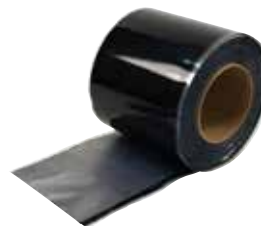
## CURED COVER TAPE

A nominal 60 mil, cured EPDM membrane strip laminated to nominal 30 mil cured butyl rubber tape and rolled onto a release liner, for a total nominal thickness of 90 mil. Commonly used to strip in metal edging.

*Requires the use of Tape Primer or Low VOC Tape Primer.*



Product Code	Description	Size	Carton	Weight	Shelf Life
08MHLAT625	Black	6" x 25' roll	4 per	25 lbs.	1 year
08MHLAT62W	White				



## UNCURED FLASHING TAPE

May be used in conjunction with the Mule-Hide Tape Primer to flash inside and outside corners, pipes, pitch pockets or other penetrations that require the flashing to be molded or conform to an irregular shape. Not permitted for use in flashing gravel stops, drip aprons or stripping seams or batten bars.

*Requires the use of Tape Primer or Low VOC Tape Primer.*



Product Code	Description	Carton	Weight	Shelf Life
08MHUT062B	6" X 25' Black	8 per	38 lbs.	6-9 months





### PRE-CUT INSIDE/OUTSIDE CORNERS

Ideal for installing inside and outside corners. Consists of .060 inch (1.5 mm) thick uncured EPDM flashing material laminated to cured butyl rubber tape and rolled onto a poly release liner providing .090 mils (2.25 mm) of total thickness.

*Requires the use of Tape Primer or Low VOC Tape Primer.*

EPDM M&R

Product Code	Description	Carton	Weight	Shelf Life
08MHPCC20	7" x 9"	20 per	5 lbs.	9 months



### POURABLE SEALER POCKETS

Ideal for sealing irregular, hard to flash penetrations through the membrane. Prefabricated pockets consisting of a 2" (50 mm) wide plastic support strip with attached Uncured EPDM Flashing Tape.

*Requires the use of Tape Primer or Low VOC Tape Primer.*

EPDM M&R

Product Code	Description	Carton	Weight	Shelf Life
08MHPSP4	4" Black	12 per	4 lbs.	9 months
08MHPSP6	6" Black		5 lbs.	



### PREMOLDED EPDM PIPE BOOTS

Accommodates single pipe sizes from 1" to 6" in diameter. Conical-shaped steps securely seal all single pipe penetrations. The large, double-thick, molded rib at the top of each step offers superior tear-resistance and reinforcement, as well as a cutting guide.

*Requires the use of Tape Primer or Low VOC Tape Primer.*

EPDM M&R

Product Code	Description	Carton	Size	Weight	Shelf Life
08MHPBTB6T	Black with clamps and tape rings	10 per	1" - 6"	8 lbs.	1 year



### WATER CUT-OFF MASTIC

Used to seal roofing membranes to stop water penetration into the roofing system. Common uses are at drain terminations and behind Mule-Hide All Purpose Bars at wall terminations.

EPDM TPO PVC M&R

Product Code	Description	Weight	Coverage	Shelf Life
08MHWTRC	11-oz Tube (25 per carton)	27 lbs.	10 Ln.ft. with 1/2" bead	1 year



### EPDM BLACK LAP SEALANT

Required for sealing EPDM seams and flashings against the effects of weathering when seamed with Splice Adhesive or All Purpose Single Seal Adhesive. Refer to the Mule-Hide EPDM Manual for appropriate use of Lap Sealant when seams and flashings are completed with Mule-Hide tape products.

EPDM M&R

Product Code	Description	Carton	Coverage	Shelf Life
08MHLPCB	11-oz Tube	25 per	22 Ln.ft. with 5/16" bead	1 year



### BLACK ONE-PART POURABLE SEALER

Designed for use with EPDM Pourable Sealant Pockets. The sealant's one-part, pourable consistency allows for quick pocket filling without mixing.

EPDM M&R

Product Code	Description	Weight	Coverage	Shelf Life
08MHP SOPBK	1/2-Gallon Pouches (4 per carton)	26 lbs.	200 cu.in.	1.5 years

# EPDM ACCESSORIES



## UNIVERSAL SINGLE-PLY SEALANT

A 100% solids, solvent free, one-part, polyether sealant that provides a weather tight seal to a variety of building substrates. Provides excellent adhesive to substrates such as stone, masonry, ceramic, marble, wood, steel, aluminum, most plastics and composites. Not recommended as a glass-glazing sealant.



## TAPE PRIMER

A solvent-based product designed for one-step cleaning and priming of EPDM surfaces to be bonded with In-Seam Tapes, Uncured Flashing Tapes, Cured Cover Tapes and Pre-Taped membranes.



Product Code	Description	Weight	Coverage	Shelf Life
08MHUSPSWH	10.1-oz Tube (24 per carton)	24 lbs.	25 Ln.ft. with 1/4" bead	1 year

Product Code	Description	Carton	Coverage	Shelf Life
08MHTAPR1	1-Gallon Pail	6 per	250 sq. ft. per gallon	9 months
08MHTAPRQ	1-Quart Can	8 per		



## LOW VOC PRIMER

A low-VOC product designed for one-step cleaning and priming of EPDM and TPO surfaces prior to the application of In-Seam Tapes and other taped products. Specially formulated using a blend of VOC exempt and non-exempt solvents to be meet the < 250 g/L VOC content requirements of the OTC Model Rule for adhesives and sealants.



Product Code	Description	Carton	Coverage	Shelf Life
08MHEPLV1	1-Gallon Pail	6 per	250 sq. ft. per gallon	9 months
08MHEPLVQ	1-Quart Can	8 per		





# TPO ACCESSORIES



## TPO PIPE SEALS

Designed as an economical flashing for single pipe penetrations on Mule-Hide TPO Membrane roof systems. TPO Pipe Seals can be used wherever the TPO Pipe Seals may be slipped over the top of the pipe.



Product Code	Description	Size	Carton	Weight
08MHTP348W	White	3/4" to 8" OD	8 per	8 lbs.



## T-JOINT COVER

Used to seal step-offs at splice intersections. Installation is mandatory on all 60 mil and 80 mil TPO systems and on 45 mil systems where step-offs have not been properly sealed.



Product Code	Description	Size	Carton	Weight
08MHTJPWH	White	4.5" circle	100 per	3 lbs.



### MOLDED SEALANT POCKETS

Interlocking, two-piece prefabricated pockets of non-reinforced TPO material used to seal pipe clusters or other irregular shaped penetrations. Pockets length can be adjusted from 7-1/2" to 11-1/2" by following the pre-molded cutting lines.



Product Code	Description	Size	Carton	Weight
08MHTMSAPW	White	7-1/2" to 11-1/2"	5 per	4 lbs.



### UNIVERSAL CORNERS

Uniform in shape and size and provide water tightness at corners formed by TPO coated metal and/or TPO flashing membrane. Provides a neat, finished look to building corners, curbs and parapet flashings with no cutting or stretching required.



Product Code	Description	Carton	Weight
08MHTUCWHE	White	20 per	5 lbs.



### THERMOPLASTIC ONE-PART POURABLE SEALER (WHITE)

Designed for use with TPO, PVC & EPDM Pourable Sealer Pockets. The sealant's one-part, pourable consistency allows for quick pocket filling without mixing.



Product Code	Description	Weight	Coverage	Shelf Life
08MHTPSWHE	1/2-Gallon Pouches (4 per carton)	29 lbs.	122 cu.in.	1 year



### TPO TAPE PRIMER

A solvent-based product designed for one-step cleaning and priming of TPO surfaces to be bonded with In-Seam Tapes, Uncured Flashing Tapes, Cured Cover Tapes, and Pre-Taped membranes. It is specially formulated using a blend of VOC exempt and non-exempt solvents to meet the < 250 g/L VOC content requirements of the OTC Model Rule for adhesives and sealants.



Product Code	Description	Carton	Coverage	Shelf Life
08MHTMP1	1-Gallon Pail	6 per	250 F <sup>2</sup> per gallon	1 year



### TPO CUT-EDGE SEALANT

A thermoplastic compound designed for use at the edge of cut Mule-Hide TPO membrane seams after the membrane has been welded to itself or to Mule-Hide TPO Coated Metal.

### LOW-VOC CUT-EDGE SEALANT

\*Meets California & Utah VOC regulations



Product Code	Description	Coverage	Carton	Shelf Life
08MHTCESCE	16-oz Bottle	250 -275 lf 1/8" bead	8 per	1 year
08MHTCELVE	16-oz Bottle	250 -275 lf 1/8" bead	8 per	1 year



### WEATHERED MEMBRANE CLEANER

Used to clean in-service EPDM membrane that has been exposed to the weather and clean TPO membrane prior to the welding process. Helps to loosen and remove dirt and other contaminants from the surface of the EPDM and TPO membranes and leaves a suitable surface for welding or the subsequent application of Tape Primer.



### LOW-VOC WEATHERED MEMBRANE CLEANER

\*Meets California & Utah VOC regulations

Product Code	Description	Carton	Coverage
08MHTWMC1	1-Gallon Pail	2 per	400 sq.ft. (1-side) per gallon
08MHTWMC5	5-Gallon Pail	1 per	
08MHTLVMC1	1-Gallon Pail / Low-VOC*	2 per	
08MHTLVMC5	5-Gallon Pail / Low-VOC*	1 per	

# NO-WELD TPO PRODUCTS



## THERMOPLASTIC ONE-PART POURABLE SEALER (WHITE)

Designed for use with TPO, PVC & EPDM Pourable Sealer Pockets. The sealant's one-part, pourable consistency allows for quick pocket filling without mixing.



Product Code	Description	Weight	Coverage	Shelf Life
08MHTPSWHE	1/2-Gallon Pouches (4 per carton)	29 lbs.	122 cu.in.	1 year



## MATE-LINE TAPE

Specifically developed for use with EPDM single-ply membrane roofing systems. May be used in conjunction with the Mule-Hide Tape Primer to strip gravel stops, drip aprons, seams or batten bars, and can be used to make repairs.



*Requires the use of Tape Primer or Low VOC Tape Primer.*

Product Code	Description	Carton	Weight	Shelf Life
08MHMLW061	6" x 100' roll	2 per	45 lbs.	1 year
08MHMLW126	12" x 65' roll	1 per	27 lbs.	
08MHMLW121	12" x 100' roll		45 lbs.	



## UNIVERSAL SINGLE-PLY SEALANT

A 100% solids, solvent free, one-part, polyether sealant that provides a weather tight seal to a variety of building substrates. Provides excellent adhesive to substrates such as stone, masonry, ceramic, marble, wood, steel, aluminum, most plastics and composites. Not recommended as a glass-glazing sealant.



Product Code	Description	Weight	Coverage	Shelf Life
08MHUSPSWH	10.1-oz Tube (24 per carton)	24 lbs.	25 Ln.ft. with 1/4" bead	1 year



## WHITE UNCURED FLASHING TAPE

May be used in conjunction with the Mule-Hide Tape Primer to flash inside and outside corners, pipes, pitch pockets or other penetrations that require the flashing to be molded or conform to an irregular shape. Not permitted for use in flashing gravel stops, drip aprons or stripping seams or batten bars.



*Requires the use of Tape Primer or Low VOC Tape Primer.*

Product Code	Description	Carton	Weight	Shelf Life
08MHUT095W	9" x 50' White	1 per	15 lbs.	6-9 months
08MHUT125W	12" x 50' White	1 per	20 lbs.	





### WEATHERED MEMBRANE CLEANER

Used to clean in-service EPDM membrane that has been exposed to the weather and clean TPO membrane prior to the welding process. Helps to loosen and remove dirt and other contaminants from the surface of the EPDM and TPO membranes and leaves a suitable surface for welding or the subsequent application of Tape Primer.

### LOW-VOC WEATHERED MEMBRANE CLEANER

\*Meets California & Utah VOC regulations



Product Code	Description	Carton	Coverage
08MHTWMC1	1-Gallon Pail	2 per	400 sq.ft. (1-side) per gallon
08MHTWMC5	5-Gallon Pail	1 per	
08MHTLVMC1	1-Gallon Pail / Low-VOC*	2 per	
08MHTLVMC5	5-Gallon Pail / Low-VOC*	1 per	



### TPO TAPE PRIMER

A solvent-based product designed for one-step cleaning and priming of TPO surfaces to be bonded with In-Seam Cover Tapes, Uncured Flashing Tapes, Cured Cover Tapes, and Pre-Taped membranes. It is specially formulated using a blend of VOC exempt and non-exempt solvents to meet the < 250 g/L VOC content requirements of the OTC Model Rule for adhesives and sealants.



Product Code	Description	Carton	Coverage	Shelf Life
08MHTMP1	1-Gallon Pail	6 per	250 F <sup>2</sup> per gallon	1 year



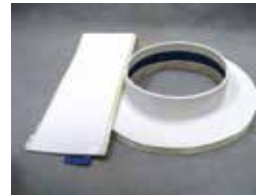
### WHITE PREMOLDED EPDM PIPE BOOTS

Accommodates single pipe sizes from 1" to 6" in diameter. Conical-shaped steps securely seal all single pipe penetrations. The large, double-thick, molded rib at the top of each step offers superior tear-resistance and reinforcement, as well as a cutting guide.

*Requires the use of Tape Primer or Low VOC Tape Primer.*



Product Code	Description	Carton	Size	Weight	Shelf Life
08MHPBTW6T	White with clamps and tape rings	10 per	1" - 6"	10 lbs.	1 year



### WHITE POURABLE SEALER POCKETS

Prefabricated pockets consisting of a 2" (50 mm) wide plastic support strip with attached Uncured EPDM Flashing Tape ideal for sealing irregular, hard to flash penetrations through the membrane. Use Mule-Hide Thermoplastic One-Part Pourable Sealer as a white filler.

*Requires the use of Tape Primer or Low VOC Tape Primer.*



Product Code	Description	Carton	Weight	Shelf Life
08MHPSP6WH	6" White	12 per	6 lbs.	6 months



### WHITE PRE-CUT INSIDE/OUTSIDE CORNERS

Ideal for installing inside and outside corners. Consists of .060 inch (1.5 mm) thick uncured EPDM flashing material laminated to cured butyl rubber tape and rolled onto a poly release liner providing .090 mils (2.25 mm) of total thickness.

*Requires the use of Tape Primer or Low VOC Tape Primer.*



Product Code	Description	Carton	Weight	Shelf Life
08MHCPSWH2	7" x 9"	20 per	8 lbs.	9 months



### CURED COVER TAPE

A nominal 60 mil, cured EPDM membrane strip laminated to nominal 30 mil cured butyl rubber tape and rolled onto a release liner, for a total nominal thickness of 90 mil. Commonly used to strip in metal edging.

*Requires the use of Tape Primer or Low VOC Tape Primer.*



Product Code	Description	Size	Carton	Weight	Shelf Life
08MHLAT62W	White	6" x 25' roll	4 per	25 lbs.	1 year

# SEALANTS & CAULKINGS



	JTS 1	SEBS 1	Si Sealant	Echo Colorway
<b>Ideal Application</b>	Large joints & termination bars for concrete, masonry, EPDM, PVC, TPO (primed), wood, vinyl and most other common building materials	Metal repair & restoration, for use with the SEBS Roof Coating System	Single-ply membrane, modified restoration, metal, SPF, for use with the Silicone Roof Coating System	Interior/exterior use for sealing around windows, doors and siding
<b>Common Uses</b>	Sealing penetrations for residential roofing; adheres to wet and underwater surfaces	Multipurpose use on all types of roofs including EPDM, TPO, ModBit, Kynar®, shingles, asphalt, concrete, masonry, tile	General waterproofing and mildew-resistant applications; seams, fasteners, windows, doors, gutters, siding	Bonds to a variety of materials including fiber cement, cedar, brick, stone, coated aluminum, steel, fiberglass, vinyl, PVC, stucco, EIFS, wood, glass, concrete, masonry, flashing tapes and Kynar® Coatings
<b>Colors</b> <small>*Reference p.17 - 18 for color chart</small>	<b>8 - Colors</b> White, Black, Bronze, Medium Bronze, Gray, Limestone, Wicker/Tan, Terra Cotta	<b>13 - Colors</b> Pure Clear, White, Black, Bronze, Medium Bronze, Gray, Dark Gray, Limestone, Sandstone, Wicker/Tan, Musket Brown, Royal Brown, Aluminum	<b>2 - Colors</b> White, Clear	<b>29 - Colors</b> White, Bone, Sanddune, Black, Monterey Taupe, Khaki Brown, Timber Bark, Navajo Beige, Moth Wing, Autumn Tan, Iron Gray, Ultra Clear, Slate Gray, Light Mist, Sail Cloth, Sandstone Beige, Boothbay Blue, Countrylane Red, Musket Brown, Pearl Gray, Rich Espresso, Bronze, Aged Pewter, Evening Blue, Woodstock, Night Gray, Heathered Moss, Tan, Mountain Sage
<b>Packaging</b>	Plastic Tubes, 12 per box			
<b>Type</b>	Moisture-cure urethane sealant made with 100% solids	Thermoplastic elastomer-based, solvent-based terpolymer sealant	High-solid, non-shrinking, oxime silicone sealant	One component, high performance advanced polymer sealant
<b>Elongation &amp; Tensile Strength</b>	400%, 400 psi	1,000%, 700 psi (700%, 700 psi – Pure Clear)	500%, 200 psi	350% - 450%, 500 psi
<b>Max. joint size</b>	2-inch	3/8-inch	1-inch	1-inch
<b>Skin time</b>	30 minutes	30 minutes	10 minutes	Less than 20 minutes
<b>Tack-free</b>	2 hours	3 hours	1 hour	Less than 1 hour
<b>VOC</b>	8 g/L, less than 1.5%	Less than 300 g/L	10 g/L, less than 3%	13 g/L
<b>Shelf Life</b>	2 years	5 years	1 year	1 year
<b>Viscosity</b>	1,500,000 cps	1,800,000 cps	700,000 cps	1,400,000 cps

## 16 Tensile Strength

The maximum stress the material will sustain before fracture. The tensile strength is calculated by dividing the maximum load



### SEBS 1

Is a high-performance, multipurpose thermoplastic elastomer-based roofing sealant. Provides excellent adhesion to most surfaces including the list above. Use to seal seams, flashings and penetrations on all types of roofs. Ideal for roofing applications where appearance is important.

*Removable Tip*



### JTS 1 JOINT & TERMINATION SEALANT

JTS 1 is a moisture-cure urethane sealant made with 100% solids. JTS 1 seals large joints, roof termination bars and adheres to concrete, masonry, EPDM, PVC, TPO (primed), wood, vinyl and most other common building materials.

Product Code	Color	Coverage	Carton	Shelf Life
30MHSEB1WH	White	See Product Data Sheet	(12) 10 oz tubes/ctn	5 Years
30MHSEB1BK	Black			
30MHSEB1GY	Gray			
30MHSEB1DG	Dark Gray			
30MHSEB1CY	Clay			
30MHSEB1SA	Sandstone			
30MHSEB1WT	Wicker/Tan			
30MHSEB1MB	Medium Bronze			
30MHSEB1MU	Musket Brown			
30MHSEB1RB	Royal Brown			
30MHSEB1BZ	Bronze			
30MHSEB1AL	Aluminum			
30MHSEB1PC	Pure Clear			

Product Code	Color	Coverage	Carton	Shelf Life
30MHJTS1WH	White	25 LF/Tube	(12) 10 oz tubes/ctn	2 years
30MHJTS1BK	Black			
30MHJTS1MB	Medium Bronze			
30MHJTS1BZ	Bronze			
30MHJTS1GY	Gray			
30MHJTS1LS	Limestone			
30MHJTS1WT	Wicker/Tan			
30MHJTS1TC	Terra Cotta			



### SILICONE ROOF SEALANT

Is a high solids non-shrinking moisture cure silicone sealant that has minimal odor, contains no solvents and has less than 10 grams per liter VOC. Provides excellent adhesion to concrete, masonry, polyurethane foam, EPDM, TPO, aged PVC, aged acrylic coatings, granular cap sheet, wood, metals, Kynar® Finishes and most other common building materials. Mule-Hide Si TPO Primer is required for TPO roof membranes.

*Removable Tip*



### RGA 1

Flashing Cement is the highest quality, most versatile asphalt based roof cement ever developed. This distinctive product is intended for use by quality driven roofing professionals who demand that their materials meet the highest performance standards. Its outstanding adhesion to wet, dry and even underwater surfaces allows application in any conditions. With wider useable temperature ranges, RGA1 applies easily at seasonal temperature extremes.

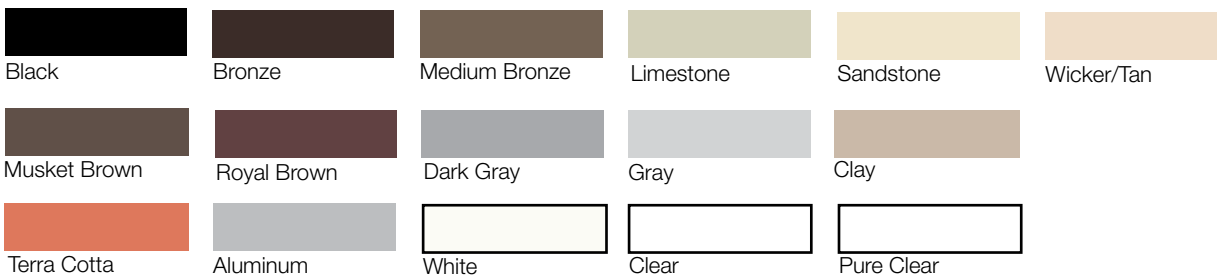
*Removable Tip*

Product Code	Color	Description	Coverage	Shelf Life
16MHSISECL	Clear	1 tube (12/ctn)	See Product Data Sheet	1 Year
16MHSISEWH	White	1 tube (12/ctn)		

Product Code	Color	Description	Coverage	Shelf Life
16MHRGA1BT	Black	1 tube (12/ctn)	See Product Data Sheet	2 Years

## Color Options:

\* Colors shown are matched as accurately as possible, but may vary slightly from finished product.





# SEALANTS & CAULKINGS



**Echo Colorway** One-component caulk with rapid moisture cure to form a durable bond. Supplies aggressive adhesion with the most common construction substrates, while ensuring complete compatibility – even with rubberized asphalt flashing and other flexible plastic building materials.

**Removable Tip**

Product Code	Color	Coverage	Carton	Shelf Life
30MHECSTWH	White	See Product Data Sheet	(12) 10 oz tubes/ctn	12 Months
30MHECSTBO	Bone			
30MHECSTSD	Sanddune			
30MHECSTBK	Black			
30MHECSTMT	Monterey Taupe			
30MHECSTKB	Khaki Brown			
30MHECSTTB	Timber Bark			
30MHECSTNB	Navajo Beige			
30MHECSTMW	Moth Wing			
30MHECSTAT	Autumn Tan			
30MHECSTIG	Iron Gray			
30MHECSTUC	Ultra Clear			
30MHECSTSG	Slate Gray			
30MHECSTLM	Light Mist			
30MHECSTSC	Sail Cloth			
30MHECSTSB	Sandstone Beige			
30MHECSTBB	Boothbay Blue			
30MHECSTCR	Countrylane Red			
30MHECSTMB	Musket Brown			
30MHECSTPG	Pearl Gray			
30MHECSTRE	Rich Espresso			
30MHECSTBZ	Bronze			
30MHECSTAP	Aged Pewter			
30MHECSTEB	Evening Blue			
30MHECSTWS	Woodstock			
30MHECSTNG	Night Gray			
30MHECSTHM	Heathered Moss			
30MHECSTTN	Tan			
30MHECSTMS	Mountain Sage			

## Color Options:

\* Colors shown are matched as accurately as possible, but may vary slightly from finished product.



## ***ASPHALT CEMENTS & COATINGS***



**Mule-Hide asphalt cements and coatings install quickly, easily and safely with consistent performance both “On-the-Roof” & “Out-of-Pail”.**

- Consistent Performance On-the-Roof & Out-of-the-Pail
- The Products You Need in the Sizes You Need
- Products That Apply Quickly, Easily, Safely
- Economical
- Extended Roof Life

# ASPHALT CEMENTS & COATINGS



## 102 FIBRATED ROOF COATING

A fiber reinforced, non-polymer modified asphalt roof coating that forms a flexible, weather resistant film, that has excellent adhesion to most surfaces.



## 111 NON-FIBRATED ROOF COATING

A professional grade, non-polymer modified asphalt roof coating that forms a flexible, weather resistant film, that has excellent adhesion to most surfaces.



Product Code	Description	Coverage	Shelf Life
16MH1025	5 Gallon Pail	See Product Data Sheet	2 Years
16MH10255	55 Gallon Drum		

Product Code	Description	Coverage	Shelf Life
16MH1115	5 Gallon Pail	See Product Data Sheet	2 Years



## 121 ASPHALT PRIMER

A general purpose penetrating asphalt primer used to promote adhesion prior to the application of hot-mopped, cold-applied and self-adhesive membrane systems, as well as roof cements, mastics, and asphalt-based adhesives.

Available in a 5 gallon pail or aerosol can

*Miami Dade County Approved. Meets ASTM D41*



## 211 PLASTIC CEMENT

For use as a cold-applied sealing and repair material in many types of asphalt roof membranes. It has a heavy "trowel-grade" consistency which makes this product ideal for flashing details and a variety of waterproofing repairs, such as moving joints and roof penetrations. Has a superior formulation that will not separate.

*Miami Dade County Approved. Meets ASTM D4586*



Product Code	Description	Coverage	Shelf Life
16MH1214	15 oz can (12/crtn)	1 Gallon Sq Ft	2 Years
16MH1215	5 Gallon Pail		

Product Code	Description	Coverage	Shelf Life
16MH2113	3 Gallon Pail	8 Gallons Sq Ft	2 Years
16MH2115	5 Gallon Pail		



## 221 WET/DRY ROOF CEMENT

A wet repair of roof leaks in many types of asphalt roof membranes. Its heavy "trowel-grade" consistency makes this product ideal for sealing and patching temporary emergency holes and cracks in roofs, even in standing water. Formulation is non-destructive to asphalt-based roofing materials.

*Miami Dade County Approved. Meets ASTM D4586, D3409*



## 231 FLASHING CEMENT

For use as a cold-applied flashing cement in many types of asphalt roof membranes. Its heavy "trowel-grade" consistency makes this product ideal for flashing details and a variety of waterproofing repairs, such as moving joints and roof penetrations. Superior formulation will not separate.

*Miami Dade County Approved. Meets ASTM D4586, D3409.*



Product Code	Description	Coverage	Shelf Life
16MH2213	3 Gallon Pail	8 Gallons Sq Ft	2 Years
16MH2215	5 Gallon Pail		

Product Code	Description	Coverage	Shelf Life
16MH2313	3 Gallon Pail	8 Gallons Sq Ft	2 Years
16MH2315	5 Gallon Pail		





**241 PREMIUM MODIFIED FLASHING CEMENT** Is a high quality formulation for use as a cold-applied bonding agent for SBS modified bitumen roof system. Heavy, "trowel-grade" consistency which makes it ideal for flashing details, attachment of membrane to steep slopes and parapet walls, and a variety of waterproofing repairs. Its flexibility and elasticity make it superior to standard plastic and flashing cements especially where there are moving joints.

*Miami Dade County Approved. Meets ASTM D4586, D3409.*

M&R



**251 PREMIUM WET/DRY ELASTOMERIC FLASHING CEMENT** Is a high quality formulation for wet repair of roof leaks in many types of asphalt roof membranes and SBS roofing systems. This product is ideal for sealing and patching temporary emergency holes and cracks in roofs, even in standing water. Can be used for emergency repairs on shingles, BUR (Built-up Roofing), concrete, and general damp proofing.

*Miami Dade County Approved. Meets ASTM D4586, D3409.*

M&R

Product Code	Description	Coverage	Shelf Life
16MH2413	3 Gallon Pail	8 Gallons Sq Ft	2 Years
16MH2415	5 Gallon Pail		

Product Code	Description	Coverage	Shelf Life
16MH25111	10.5 oz Tube	8 Gallons Sq Ft	2 Years
16MH2513	3 Gallon Pail		
16MH2515	5 Gallon Pail		



**301 FIBRATED EMULSION ROOF COATING** Is an asphalt-based, clay emulsion roof coating. Superior formulation provides increased weather resistance and durability. This product does not flow when applied in thick coatings and when dry, will stay in place even when exposed to elevated temperatures. In addition, the solvent free formulations are water based and non-combustible, requiring no "red tag" labeling for fire hazard.

*Miami Dade County Approved. Meets ASTM D1227 Type III Class I.*

M&R



**311 NON-FIBRATED EMULSION ROOF COATING** Is an asphalt-based, clay emulsion roof coating that can be used as a protective coating over smooth surfaced asphalt built-up and modified bitumen membranes. Can also be used as a base coat for reflective coatings. This product does not flow when applied in thick coatings. After drying, stays in place even when exposed to elevated temperatures.

*Miami Dade County Approved. Meets ASTM D1227 Type III Class I.*

M&R

Product Code	Description	Coverage	Shelf Life
16MH3015	5 Gallon Pail	See Product Data Sheet	18 Months
16MH30155	55 Gallon Drum		

Product Code	Description	Coverage	Shelf Life
16MH3115	5 Gallon Pail	See Product Data Sheet	18 Months
16MH31155	55 Gallon Drum		



**401 PREMIUM FIBRATED ALUMINUM ROOF COATING** Provides premium, high-performance protection for asphalt-based roofs. It is a heavy bodied formulation with special reinforcing fibers that "push" the aluminum flakes to the surface for long lasting reflectivity and greater durability. In addition, this formula is non-destructive to asphalt-based roofing membranes.

*Miami Dade County Approved. Meets ASTM D2824 Type III.*

M&R



**406 STANDARD FIBRATED ALUMINUM ROOF COATING** Provides high performance protection for asphalt-based roofs. It is a heavy bodied formulation with special reinforcing fibers that "push" the aluminum flakes to the surface for long lasting reflectivity and greater durability. In addition, this formula is non-destructive to asphalt-based roofing membranes.

*Miami Dade County Approved. Meets ASTM D2824 Type III.*

M&R

Product Code	Description	Coverage	Shelf Life
16MH4015	5 Gallon Pail	See Product Data Sheet	2 Years
16MH40155	55 Gallon Drum		

Product Code	Description	Coverage	Shelf Life
16MH4065	5 Gallon Pail	See Product Data Sheet	2 Years
16MH40655	55 Gallon Drum		



# ASPHALT CEMENTS & COATINGS



**410 PREMIUM NON-FIBRATED ALUMINUM ROOF COATING** Provides premium, high-performance protection for asphalt-based roofs. It is easier to spread and provides greater coverage, though it weathers more rapidly. This formula is non-destructive to asphalt-based roofing membranes.

*Miami Dade County Approved. Meets ASTM D2824 Type I.*

M&R

Product Code	Description	Coverage	Shelf Life
16MH4105	5 Gallon Pail	See Product Data Sheet	2 Years
16MH41055	55 Gallon Drum		



**416 STANDARD NON-FIBRATED ALUMINUM ROOF COATING** Provides high-performance protection for asphalt-based roofs. It is easier to spread and provides greater coverage, though it weathers more rapidly. This formula is non-destructive to asphalt-based roofing membranes.

*Miami Dade County Approved. Meets ASTM D2824 Type I.*

M&R

Product Code	Description	Coverage	Shelf Life
16MH4165	5 Gallon Pail	See Product Data Sheet	2 Years
16MH41655	55 Gallon Drum		



**420 MOD BIT ADHESIVE - BG** is a select formulation for use as a cold-applied bonding agent for SBS modified bitumen base sheets and SBS modified bitumen cap sheets.

*Miami Dade County Approved. Meets ASTM D3019.*

M&R

Product Code	Description	Coverage	Shelf Life
16MH4205	5 Gallon Pail	1-1.5 Gallons Sq Ft	18 Months



**421 MOD BIT ADHESIVE - Trowel Grade** is a high quality formulation for use as a cold-applied bonding agent for SBS modified bitumen roof systems. Heavy, "trowel-grade" consistency makes this product ideal for flashing details, attachment of membrane to steep slopes and parapet walls and a variety of waterproofing repairs, especially at moving joints where its flexibility and elasticity make it superior to standard plastic cements. In addition, the formulation is non-destructive to asphalt based roofing membranes.

*Miami Dade County Approved. Meets ASTM D4586.*

M&R

Product Code	Description	Coverage	Shelf Life
16MH4213	3 Gallon Pail	1-1.5 Gallons Sq Ft	2 Years
16MH4215	5 Gallon Pail		



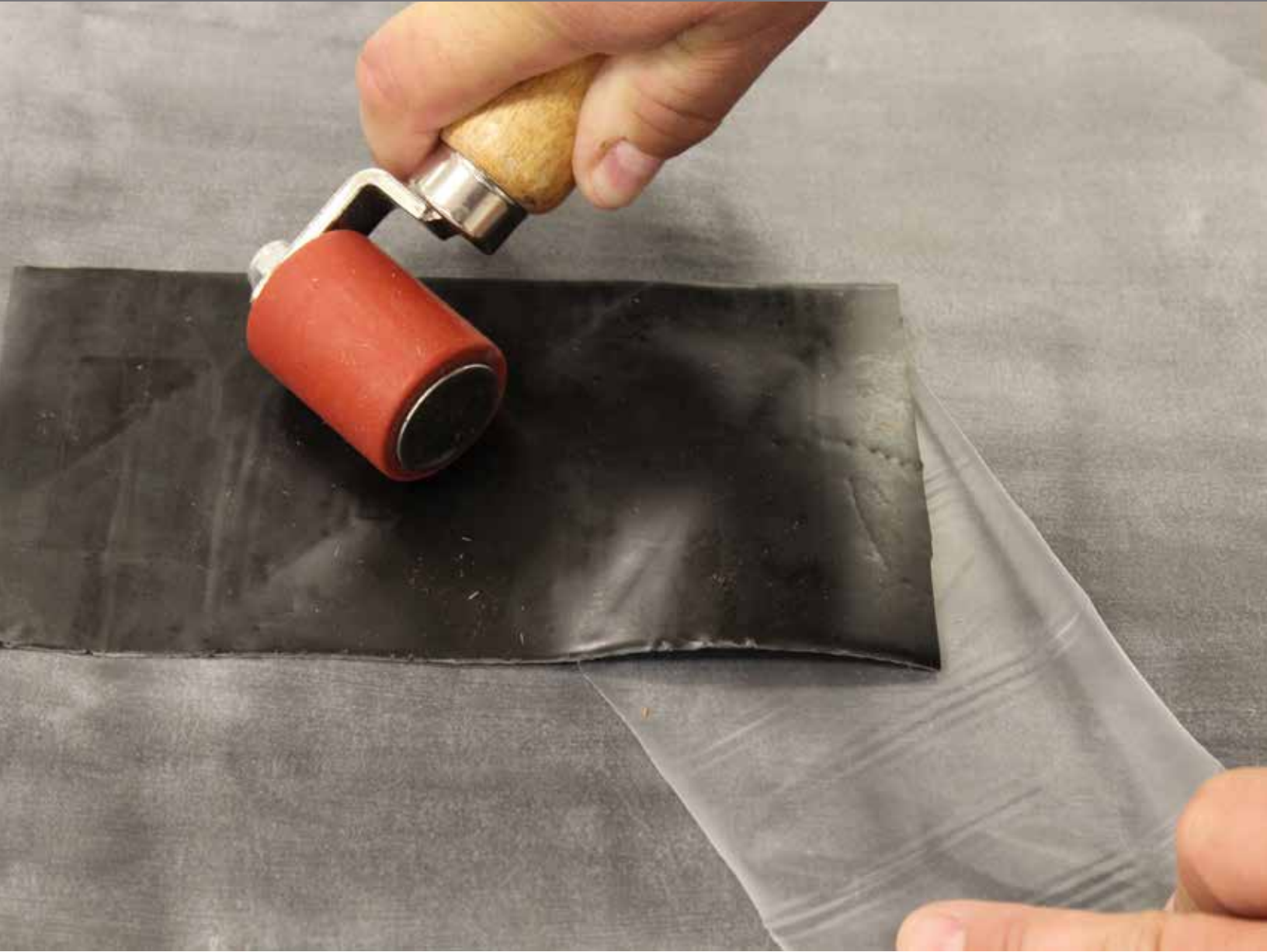
**271 MOD BIT SEALANT** Is a fibrated, cartridge grade, rubberized adhesive with bonding strength designed specifically for use with modified bituminous products. It sets by loss of solvent content through evaporation. Because of its ease of application and vertical bonding strength, it is recommended for membrane seaming, flashing and detail work. Also has excellent low temperature flexibility.

*Miami Dade County Approved. Meets ASTM D4598, D3409.*

M&R

Product Code	Description	Coverage	Shelf Life
16MH27111	10.3 oz tube	See Product Data Sheet	2 Years

## ***SEALFAST TAPES & PRODUCTS***



**SEAL-FAST® TAPES** may be used on a wide variety of surfaces including difficult roof materials such as : EPDM, TPO, most PVC, CSPE/Hypalon, CPE, SBS, APP modified, asphalt BURs, coal tar BURs, all metal roofs, tiles, shingle, aluminum, galvanized steel, gypsum board, wood, polyethylene, propylene, polystyrene, fiberglass, brick, concrete, masonry, OSB, etc.. This product may be used to repair gutters, chimney flashings, and metal roofs on mobile homes and transport vehicles. Seal-Fast® Tape makes a permanent watertight seal. Can be installed in temperatures down to -20°F (with our Seal-Fast® Primer). Also available in Seal-Fast Plus, Aluminum, Double Stick and Fabric tapes.

# SEALFAST TAPE AND PRODUCTS



## .035 SEAL-FAST TAPE

May be used on a wide variety of surfaces including difficult roof materials. This product may be used to repair gutters, chimney flashings, and metal roofs on mobile homes and transport vehicles. Seal-Fast® Tape makes a permanent watertight seal.



## SEAL-FAST FABRIC TAPE - WHITE

This product may be used to repair gutters, chimney flashings, metal roofs on mobile homes and transport vehicles. Seal-Fast® Fabric Tape makes a permanent watertight seal.

M&R

Product Code	Color	Description	Carton	Weight	Shelf Life
08MHSF250W	White	2" X 50'	12/ctn	24 lbs	1 year
08MHSFT35W		3" X 50'	8/ctn		
08MHSFT45W		4" X 50'	6/ctn		
08MHSFT62W		6" X 25'	6/ctn		
08MHSFT65W		6" X 50'	4/ctn		
08MHSFT85W		8" X 50'	3/ctn		
08MHSFT25W		12" X 50'	2/ctn		
08MHSF245W		24" X 50'	1/ctn		
08MHSF250G		Gray	2" X 50'		
08MHSFT45G	4" X 50'		6/ctn		
08MHSFT65G	6" X 50'		4/ctn		
08MHSFT85G	8" X 50'		3/ctn		
08MHSFT25G	12" X 50'		2/ctn		
08MHSF245G	24" X 50'		1/ctn		
08MHSF250B	Black	2" X 50'	12/ctn		
08MHSFT35B		3" X 50'	8/ctn		
08MHSFT45B		4" X 50'	6/ctn		
08MHSFT65B		6" X 50'	4/ctn		
08MHSFT85B		8" X 50'	3/ctn		
08MHSFT22B		12" X 25'	3/ctn		
08MHSFT25B		12" X 50'	2/ctn		
08MHSF245B		24" X 50'	1/ctn		

M&R

Product Code	Description	Carton	Weight	Shelf Life
08MHSFF250	2" X 50'	12/ctn	24 lbs	1 year
08MHSFF45W	4" X 50'	6/ctn		
08MHSFF62W	6" X 25'	6/ctn		
08MHSFF65W	6" X 50'	4/ctn		
08MHSFF85W	8" X 50'	3/ctn		
08MHSFF25W	12" X 50'	2/ctn		
08MHSFF24W	24" X 50'	1/ctn		



## .065 SEAL-FAST TAPE PLUS

This product may be used to repair gutters, chimney flashings, and metal roofs on mobile homes and transport vehicles. Seal-Fast® Tape Plus makes a permanent watertight seal.

M&R

Product Code	Color	Description	Carton	Weight	Shelf Life
08MHSFP42B	Black	4"x25'	6/ctn	24 lbs	1 year
08MHSFP62B		6"x25'	4/ctn		
08MHSFP42W	White	4"x25'	6/ctn		
08MHSFP62W		6"x25'	4/ctn		



## SEAL-FAST TEMPORARY LOW-SLOPE ROOF SEALER

Can immediately seal a roof leak when weather is not permitting for a permanent repair.

M&R

Product Code	Description	Carton	Weight	Shelf Life
16MHSFE25	25 Pound Jug	2 per	50 lbs.	9 months



### SEAL-FAST ALUMINUM TAPE

as a protective coating for surfaces where abrasion and corrosion resistance is required. The Seal-Fast® Aluminum Tape seals to itself so that it can be cut and folded around an object.

M&R

Product Code	Description	Carton	Weight	Shelf Life
08MHSF250A	2" X 50'	12/ctn	24 lbs	1 year
08MHSFT45A	4" X 50'	6/ctn		
08MHSFT65A	6" X 50'	4/ctn		



### SEAL-FAST DOUBLE STICK TAPE

Used to create a water-tight, conformable seal or weather proof bond between two surfaces. Use as a lap seal, under the foot of an equipment curb or skylight. Can be rolled into a bead or ball to form a gasket, seal a gap or seal, as needed.

M&R

Product Code	Description	Carton	Weight	Shelf Life
08MHSFD150	1" X 50'	24/ctn	24 lbs	1 year
08MHSFD250	2" X 50'	12/ctn		
08MHSFD350	3" X 50'	8/ctn		



### SEAL-FAST PRIMER

Used to ensure proper adhesion when installing Seal-Fast® Tape or Seal-Fast® Fabric Tape in temperatures below 40°F or when the surface quality is questionable. Seal-Fast® Primer is also used on mortar, porous surfaces and granulated surfaces (granules must be removed).

Available in a quart can or aerosol can

M&R

Product Code	Description	Carton	Weight	Shelf Life
16MHSFP1Q	quart	12/ctn	24 lbs	1 year
16MHSFP14	14 oz can	12/ctn	6 lbs	1 year



### SEAL-FAST CLEANER

Removes grease, oil, oxidations and other contaminants from roof surfaces prior to the application of Seal-Fast® Tapes. Mule-Hide Seal-Fast® Spray Cleaner leaves no residue, dries fast, and is non chlorinating so it is environmentally friendly and legal in all states.

M&R

Product Code	Description	Carton	Weight	Shelf Life
16MHSFC14	14 oz	12/ctn	12 lbs	1 year



# WATERPROOFING



## SILICONE MASONRY WALL COATING

Is a single component wall coating that creates a durable, breathable, watertight barrier that is resistant to natural weathering. 100% Silicone Masonry Wall Coating is also graffiti resistant and will not allow adhesion of most types of water and solvent based paints. It is manufactured from durable inorganic silicone elastomers, reinforcing and reflective pigments and silane adhesion promoters.



## A-400-W MASONRY WALL COATING

Formulated to provide a flexible, waterproofing, liquid-applied membrane for exterior masonry surfaces.

Product Code	Color	Description	Coverage	Shelf Life
16MHSIMC1	White	1 Gallon Pail	1-2 Gallons Sq Ft	1 Year
16MHSIMC5		5 Gallon Pail		
16MHSIMC55		55 Gallon Pail		
16MHSIMC5G	Gray	5 Gallon Pail		
16MHSIM55G		55 Gallon Pail		
16MHSIMC5T	Tan	5 Gallon Pail		
16MHSIMC5B	Black	5 Gallon Pail		
16MHSIM5CL	Clear	5 Gallon Pail		

Product Code	Description	Coverage	Shelf Life
16MH400W5	5 Gallon Pail	1 Gallon Sq Ft	1 Year
16MH400W55	55 Drum		

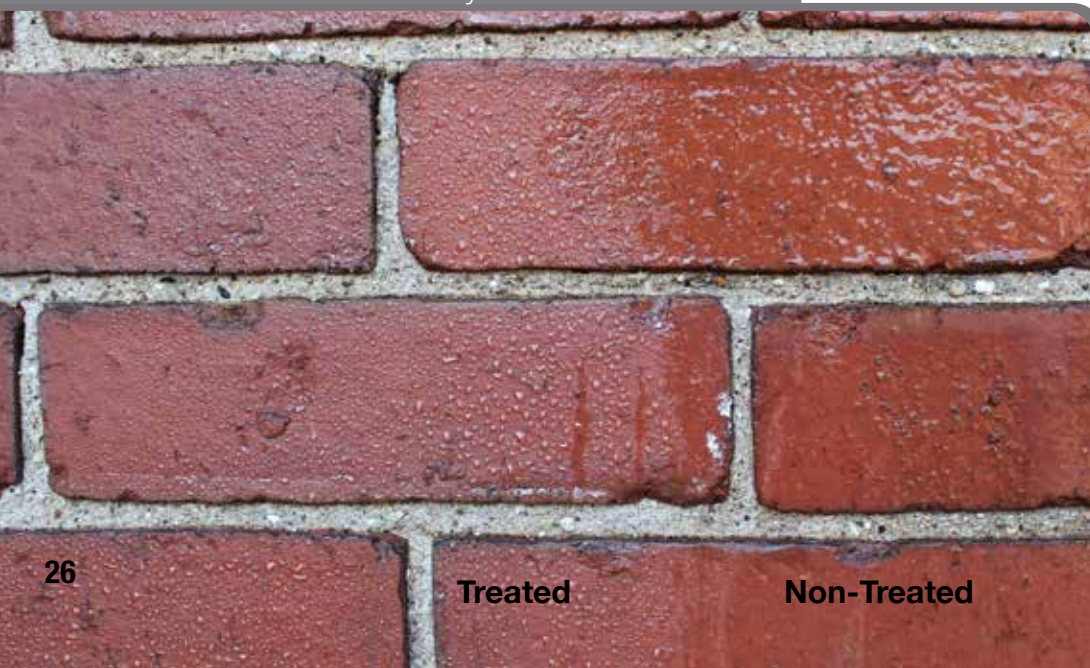


## MORTAR SENTRY

Designed for use on brick, mortar, concrete block, cultured stone, sandstone and concrete. It is not recommended for use on non-silicate natural stone such as limestone or dolomite. Mortar Sentry is a silane/siloxane based waterproofing treatment consisting of two products. Mortar Sentry Water Seal 10 is a 10% active solution and is recommended for vertical surfaces. Mortar Sentry Water Seal 15 is a 15% active solution and is recommended for horizontal surfaces.

Product Code	Description	Coverage	Shelf Life
16MHMSW101	1 Gallon Pail	See Product Data Sheet	1 Year
16MHMSW105	5 Gallon Pail		
16MHMSW151	1 Gallon Pail		
16MHMSW155	5 Gallon Pail		

Treated with Mortar Sentry vs non-treated



Treated

Non-Treated

# ACCESSORIES



## MP LIQUID SEALANT

A 100% solids, non-shrink, one-part polyurethane pourable sealer can be used with metal roof seams and fasteners, gutters, damaged polyurethane foam and roof projections on PVC, EPDM, primed TPO, primed Mod Bit and primed BUR roofing systems.



Product Code	Description	Carton	Shelf Life
08MHMPLS2W	White	4 pouches per	1 Year
08MHMPLS2B	Black		
08MHMPLS2G	Gray		



## REPAIR HERO

A solvent-based, fiber-reinforced terpolymer sealant intended for the repair of asphalt, modified bitumen, metal, Kynar®, concrete, TPO, PVC, Elvaloy®/PVC, Hypalon® (CSPE), PIB and EPDM roofs.



Product Code	Description	Carton	Weight
16MHRHWH1	1 Gallon Pail - White	4 per	33.8 lbs.
16MHRHWH3	3 Gallon Pail - White	1 per	25 lbs.
16MHRHBK1	1 Gallon Pail - Black	4 per	33.8 lbs.
16MHRHBK3	3 Gallon Pail - Black	1 per	25 lbs.
16MHRHGY1	1 Gallon Pail - Gray	4 per	33.8 lbs.
16MHRHGY3	3 Gallon Pail - Gray	1 per	25 lbs.



## SEAM PROBE

Seam Probe is a hand tool used to check the integrity of heat welded seams on heat welded roofing systems. The probe has a heat-treated tip and the handle is tapped to fit standard threaded extension handles allowing the tool to be used from the standing position.



Product Code	Description	Carton	Weight
08MHSMPRB	White	1 per	2 lbs.



## SHAPESHIFT PITCH PAN

Consist of straight and outside corner sections snap together to create an endless number of pitch pan sizes to seal around roof projections. The pieces snap together with interlocking joints.



Product Code	Description	Carton	Weight
08MHSSPC48	Corners	48 per	6 lbs.
08MHSSPC16	Corners	16 per	2 lbs.
08MHSSPS16	Straights	16 per	2 lbs.





*“The name trusted in roofing since 1906”*

---

**Customer Line: 800-786-1492 • [www.mulehide.com](http://www.mulehide.com)**

*Check our website monthly for the latest updates & technical bulletins.*

**National Support Center • 1195 Prince Hall Drive • Beloit, WI 53511**

**tel. 608.365.3111 • fax. 608.365.7852**

---



The information herein should not be considered all-inclusive and should always be accompanied by a review of the Mule-Hide specifications and guidelines and good application practices.

This information herein is based upon data and knowledge considered to be true and accurate at the time of printing and is provided for the reader's consideration, investigation and verification. No statement made by anyone may supersede this information, except when done in writing by Mule-Hide Products Co., Inc. Mule-Hide Products Co., Inc. does not warrant any results to be obtained. Statements concerning possible use of Mule-Hide products are made without knowledge of your particular roof and such an application may not be fit for your particular purpose. MULE-HIDE DISCLAIMS ALL WARRANTIES, INCLUDING THE IMPLIED WARRANTY OF MERCHANTABILITY AND FITNESS FOR A PARTICULAR PURPOSE, except written warranties attached to Mule-Hide products and written warranties signed by an officer of Mule-Hide.

Visit the Mule-Hide website at [www.mulehide.com](http://www.mulehide.com) prior to any installation for updated technical specifications and details. Mule-Hide is a U.S. registered trademark. DensDeck is wholly owned registered trademark of Georgia-Pacific Gypsum LLC/ Georgia-Pacific Wood Products LLC. SECUROCK is wholly owned registered trademark of USG Corporation. Kynar is wholly owned registered trademark of Arkema Inc. Evaloy is wholly owned registered trademark of E. I. du Pont de Nemours and Company or its affiliates. All rights reserved.